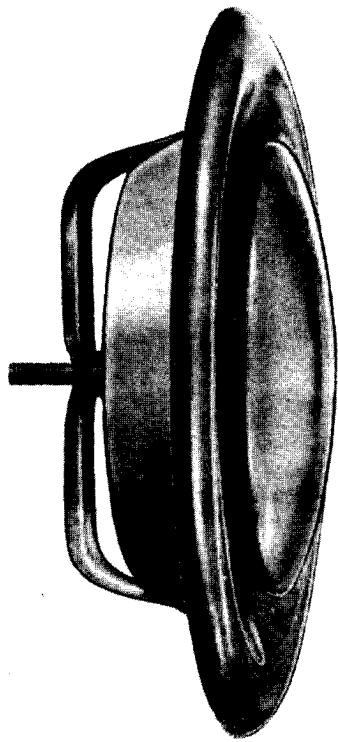


SAUDI AIR CONTROL SYSTEM
INDUSTRIAL REGISTRATION NO.353



DISC VALVES





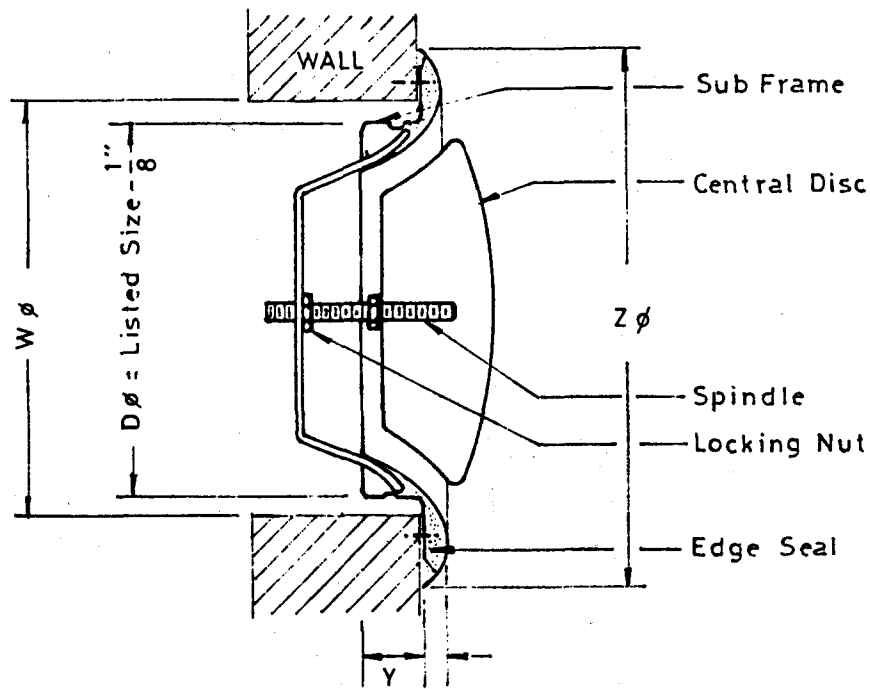
SAUDI AIR CONTROL SYSTEM

DISC VALVES

OUTSTANDING FEATURES:

Air flow rate is controlled by rotating the central disc . Easy installation by means of sub-frame and screw fixing . Central disc is fixed by the locking nut. With edge seal. Standard construction :

- Face-galvanized steel.
- Spindle and locking nut-galvanized steel.
- Sub-frame -galvanized steel. Finish—white enamel.



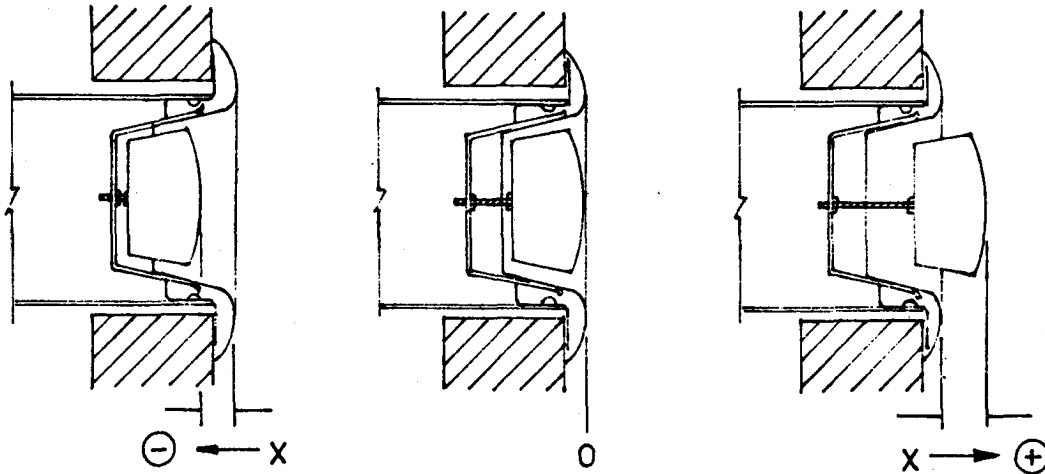
DIMENSIONS

TYPE	W (in.)	D (in.)	Y (in.)	Z (in.)
GDV 4	4-1/8	3-7/8	-	5 1/2"
GDV 6	6-1/8	5-7/8	-	8 1/2"
GDV 8	8-1/8	7-7/8	-	10"



SAUDI AIR CONTROL SYSTEM

PERFORMANCE DATA



GDV 4

CFM		15	20	25	30	35	40	45	50	60	70	80	90
$X = -\frac{3}{8}$ "	Static Press.	.31	.52	.78	.944								
	NC	—	26	31	33								
$X = -\frac{1}{4}$ "	Static Press.		.27	.4	.56	.74	.94						
	NC		—	25	31	33	36						
$X = 0$	Static Press.				.25	.33	.425	.526	.637	.89	1.0		
	NC				—	26	29	32	35	37	38		
$X = +\frac{1}{4}$ "	Static Press.					.21	.258	.314	.435	.576	.734	.91	
	NC					—	25	29	33	34	37	38	
$X = +\frac{1}{2}$ "	Static Press.							.217	.30	.40	.51	.633	
	NC							—	27	31	33	36	

GDV 6

CFM		30	35	40	45	50	55	60	70	80	90	100	120	140	160	180
$X = -\frac{1}{4}$ "	Static Press.	.38	.50	.64	.79	.96										
	NC	25	29	33	36	37										
$X = -\frac{1}{8}$ "	Static Press.		.225	.286	.355	.43	.511	.60	.79	.10						
	NC		—	—	26	30	33	34	36	38						
$X = 0$	Static Press.				.20	.245	.29	.342	.452	.58	.714	.865				
	NC				—	—	26	27	32	36	37	38				
$X = +\frac{1}{4}$ "	Static Press.									.264	.328	.40	.553	.732	.933	
	NC									25	29	32	36	37	38	
$X = +\frac{1}{2}$ "	Static Press.										.26	.315	.44	.58	.74	.92
	NC										26	27	34	36	37	38



SAUDI AIR CONTROL SYSTEM

PERFORMANCE DATA

GDV 8

CFM		40	50	60	80	100	120	140	180	200	230	260	290	320	360	400
X = - 3/4"	Static Press.	.376	.565	.79												
	NC	—	28	34												
X = - 1/2"	Static Press.			.276	.466	.70	.975									
	NC			—	27	34	37									
X = - 1/4"	Static Press.				.20	.30	.42	.55	.874							
	NC				—	25	31	34	37							
X = 0	Static Press.					.20	.28	.37	.58	.70	.91					
	NC					—	25	28	36	37	38					
X = + 1/4"	Static Press.						.20	.26	.41	.50	.64	.80				
	NC						—	—	31	33	36	37				
X = + 1/2"	Static Press.								.25	.30	.39	.49	.59	.71		
	NC								25	27	32	36	37	38		
X = + 3/4"	Static Press.										.25	.32	.39	.46	.57	.70
	NC										25	29	32	36	37	38

NOTE : Performance data given are applicable to a ducted connection.

PERFORMANCE NOTES & SYMBOLS

- CFM — Air Volume in cubic feet per minute .
- " H₂O — Unit measurement of Static Pressure , inches of water.
- NC — Noise Criteria -based on Sound Pressure Level. NC values on the performance data are based on 4 db room attenuation.
- — denotes NC values below 25 db .



SAUDI AIR CONTROL SYSTEM

FIRE DAMPER DISC VALVE

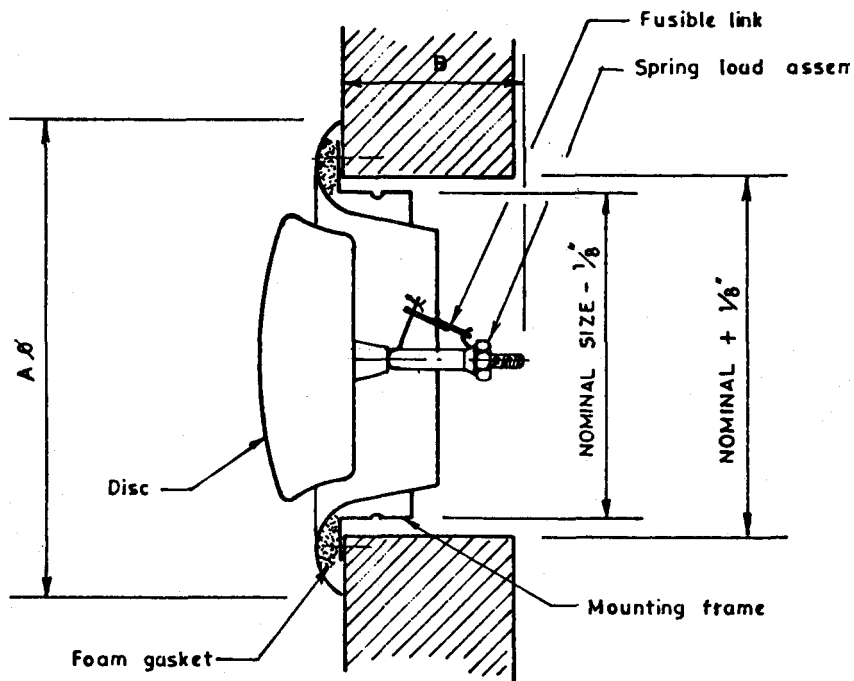
Model GDVF

OUTSTANDING FEATURES

- Advanced design of GDVF valves enable the disc valve function also as a fire damper.
- Combined with UL rated fusible link to shut off the valve in case of fire and thus prevent fire spreading thru ventilation duct.
- Air volume can be easily adjusted by rotating center disc

CONSTRUCTION

- Valve is made of steel with backed off white enamel as standard.
- Fusible link, 165°F as standard. 212°F available as optional.
- Mounting frame; die formed galvanized, steel.



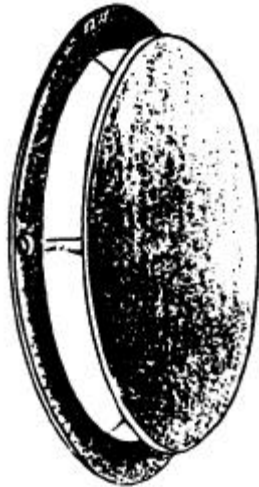
MODEL	NOMINAL SIZE	A	B	WEIGHT (Kg)
GDVF - 4	4"	5 1/2"	4"	0.25
GDVF - 6	6"	8 1/2"	5 1/2"	0.62
GDVF - 8	8"	10"	6"	0.81

Performance data is same as series GDV Valves



SAUDI AIR CONTROL SYSTEM

DISC VALVES



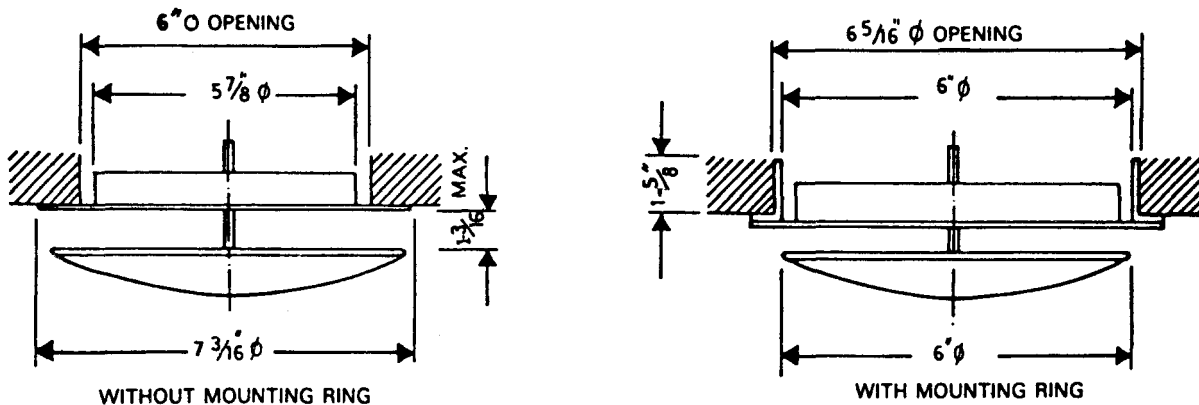
OUTSTANDING FEATURES:

- The round shape of this units allows for its use in variety of applications
- It is widely used for exhaust inlets in wash rooms and bath rooms.
- Airflow regulations may be achieved by manually rotating the centre section of the unit.
- The material used for its construction is non-corrosive and will withstand temperatures of up to 100°C without deformation.

CONSTRUCTION : PVC. material . MOUNTING : With mounting ring or screws. FINISHING: Standard :Off white.

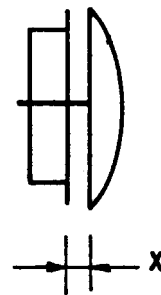
MODEL - GDVP-6

DIMENSIONAL DATA



PERFORMANCE DATA

CFM	50	60	70	80	90	100	120	130	140
X = 1/4"	0.15								
X = 3/8"	0.10	0.12	0.16						
X = 5/8"	0.05	0.08	0.10	0.15					
X = 3/4"	0.03	0.05	0.07	0.10	0.12	0.16			
X = 1"	0.02	0.03	0.05	0.06	0.08	0.10	0.15		
X = 1 3/16"	0.01	0.02	0.04	0.05	0.07	0.08	0.10	0.12	0.16



Pressure loss in inches W.G.



SAUDI AIR CONTROL SYSTEM

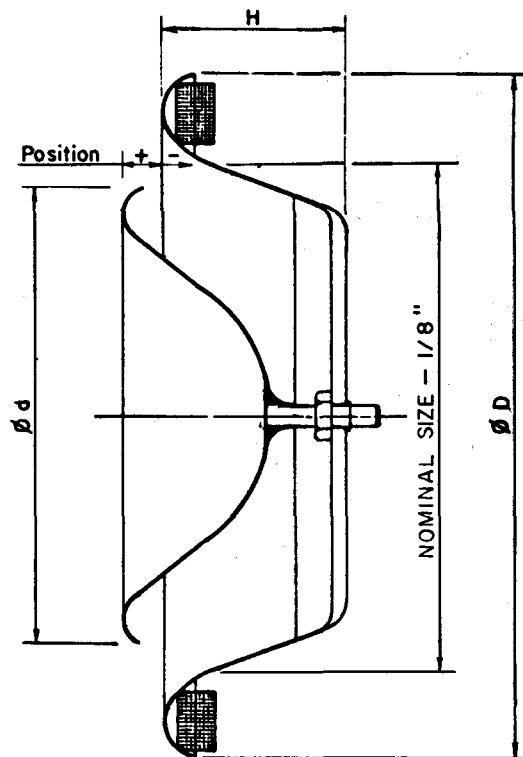
AIR SUPPLY DISC VALVE Model - GDVS

GDVS valve is designed to be an air supply valve for mechanical ventilation.

CONSTRUCTION

GDVS valve is made of sheet steel with baked off white enamel finish as standard. The center disc can be easily adjusted by

rotating to set the desired air volume. Mounting frame; die formed, galvanized steel.



MODEL	NOMINAL SIZE	Ø D (inches)	Ø d (inches)	H (inches)
GDVS - 4	4"	5 - 3/8	3 - 3/4	1 - 7/8
GDVS - 5	5"	6 - 5/16	4 - 5/16	1 - 15/16
GDVS - 6	6"	8	5 - 5/16	2 - 3/8
GDVS - 8	8"	9 - 13/16	7 - 5/8	3



SAUDI AIR CONTROL SYSTEM

PERFORMANCE DATA

GDVS-4

CFM		15	20	25	30	35	40	45	50	60	70	80	90
X = -1/8"	Static Press	.208	.368	.54	.78								
	NC	—	30	35	40								
X = 0	Static Press		.14	.188	.288	.392							
	NC		—	30	35	40							
X = +1/8"	Static Press				.148	.196	.256	.304	.38				
	NC				—	30	35	35	40				
X = +1/4"	Static Press						.148	.172	.224	.308			
	NC						—	30	35	40			
X = +1/2"	Static Press									.14	.168	.26	.304
	NC									—	30	35	40
	Terminal Velocity	THROW — in (feet)											
X = -1/8"	50 FPM	3	4	4	5								
X = +1/8"	50 FPM	2	2	3	4	4	5	5	6				
X = +1/2"	50 FPM	1	2	2	3	3	4	4	5	5	6	7	8

GDVS-5

CFM		15	20	25	30	35	40	45	50	60	70	80	90	100	120	140	160
X = -1/8"	Static Press			.152	.22	.304	.408	.50									
	NC			—	25	30	35	40									
X = 0	Static Press					.128	.168	.208	.264	.368	.52	.70					
	NC					—	25	25	30	30	35	40					
X = +1/8"	Static Press								.128	.18	.252	.332	.408	.48	.76		
	NC								—	25	25	30	35	35	40		
X = +1/4"	Static Press									.152	.196	.248	.292	.48	.64		
	NC									—	25	30	30	35	40		
X = +1/2"	Static Press										.104	.164	.148	.232	.32	.42	
	NC										—	25	25	30	35	40	
	Terminal Velocity	THROW — in (feet)															
X = -1/8"	50 FPM			5	6	6	7	8									
X = 0	50 FPM			4	5	5	6	7	7	8	9	10					
X = +1/2"	50 FPM			3	3	4	4	5	5	6	7	7	8	9	10	11	12



SAUDI AIR CONTROL SYSTEM

PERFORMANCE DATA

GDVS-6

CFM		35	40	45	50	60	70	80	90	100	120	140	160	180
X = -1/8"	Static Press	.096	.128	.16	.208	.288								
	NC	—	25	30	35	40								
X = 0	Static Press			.096	.128	.18	.244	.344						
	NC			—	25	30	35	40						
X = +1/8"	Static Press				.088	.124	.168	.228	.284	.328				
	NC				—	25	25	30	35	40				
X = +1/4"	Static Press						.108	.148	.184	.22	.32	.50		
	NC						—	25	30	30	35	40		
X = +1/2"	Static Press								.072	.088	.132	.192	.24	.312
	NC								—	25	30	35	35	40
	Terminal Velocity	THROW - in (feet)												
X = 0	50 FPM	2	2	3	3	4	5	5						
X = +1/4"	50 FPM	2	2	2	3	3	4	4	5	5	6	7		
X = +1/2"	50 FPM	1	1	2	2	2	3	3	4	4	5	6	6	7

GDVS -8

CFM		35	40	45	50	60	70	80	90	100	120	140	160	180	200
X = -1/8"	Static Press	.164	.208	.26	.32	.44									
	NC	—	30	30	35	40									
X = 0	Static Press			.152	.188	.252	.328								
	NC			—	30	35	40								
X = +1/8"	Static Press				.156	.20	.26	.324							
	NC				—	30	35	40							
X = +1/4"	Static Press							.18	.212	.288	.40				
	NC							—	30	35	40				
X = +1/2"	Static Press										.152	.188	.214	.36	
	NC										—	30	35	40	
	Terminal Velocity	THROW - in (feet)													
X = -1/8"	50 FPM	3	3	4	4	5									
X = +1/4"	50 FPM	2	2	2	3	3	4	4	5	5	6	7			
X = +1/2"	50 FPM	1	2	2	2	3	3	4	4	4	5	6	6	7	7



SAUDI AIR CONTROL SYSTEM

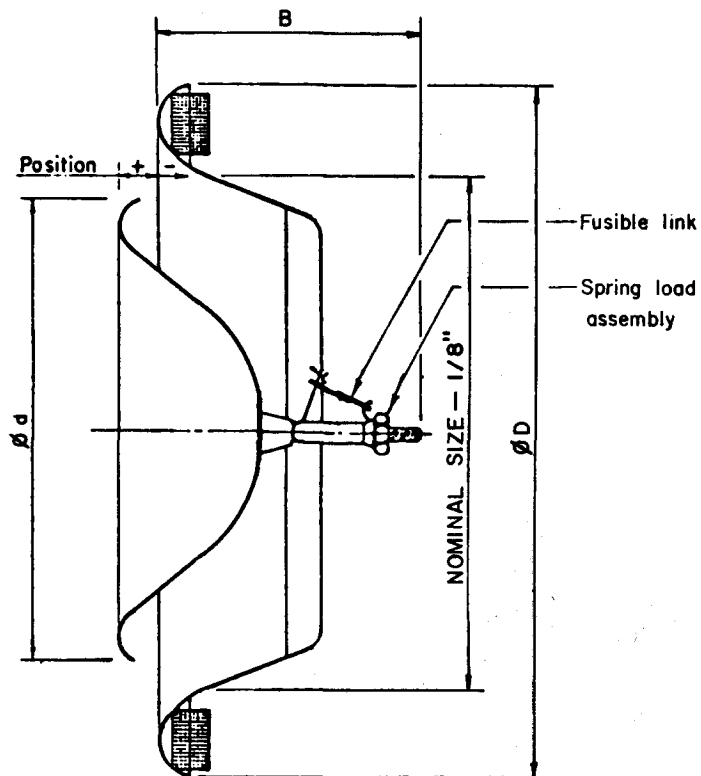
AIR SUPPLY FIRE DAMPER DISC VALVE Model-GDFS

OUTSTANDING FEATURES

- Advanced design of GDFS valves enable the disc valve function also as a fire damper .
- Combined with UL rated fusible link to shut off the valve in case of fire and thus prevent fire spreading thru ventilation duct.
- Air volume can be easily adjusted by rotating center disc .

CONSTRUCTION

- Valve is made of steel with baked off white enamel as standard,
- Fusible link, 165°F as standard 212° F available as optional.
- Mounting; frame die formed galvanized steel .

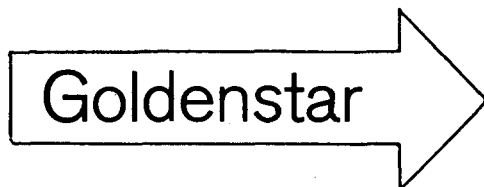


MODEL	NOMINAL SIZE	OD (inches)	Od (inches)	B (inches)
GDFS - 4	4"	5-3/8	3-3/4	4
GDFS- 6	6"	8	5-5/16	5-1/2
GDFS - 8	8"	9-13/16	7-5/8	6

Performance data is same as series GDVS valves



SAUDI AIR CONTROL SYSTEM



Assured Quality

Also available ••

**GRILLES AND REGISTERS
DIFFUSERS - LIGHT TROFFERS
VOLUME DAMPERS - LOUVERS
FIRE DAMPERS
FIRE/SMOKE COMBINATION DAMPERS
ACCESS DOORS
CABLE TRAYS
VARIABLE AIR VOLUME UNITS
SOUND ATTENUATORS
ACOUSTIC LOUVERS
ACOUSTIC CELLS
ACOUSTIC - FAN
ACOUSTIC - PACK AIR HANDLERS
ACOUSTIC PANELS**