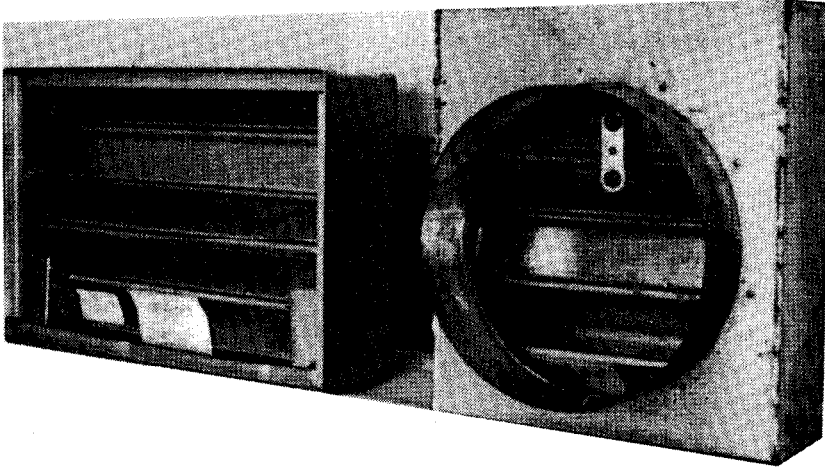
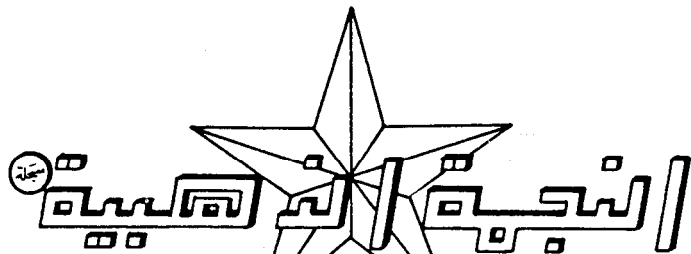


SAUDI AIR CONTROL SYSTEM
INDUSTRIAL REGISTRATION NO.353



FIRE DAMPERS



المصنع السعودي لصناعة فتحات وهوابط توزيع الهواء

ترخيص صناعي رقم ٣٥٣ / ص

FIRE DAMPERS

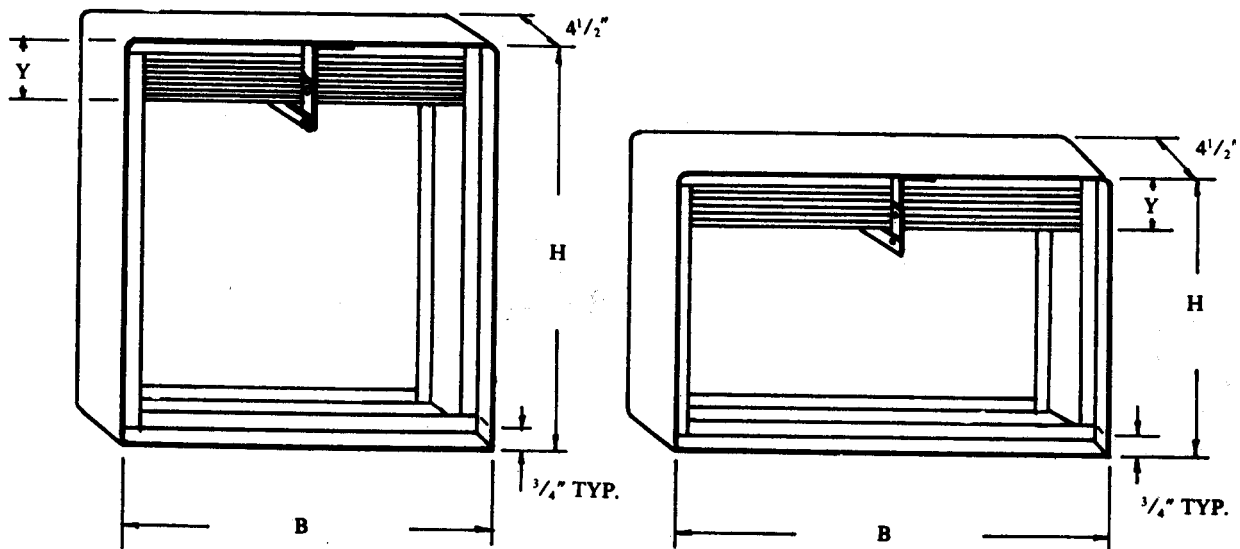
OUTSTANDING FEATURES:

- Gravity operated for vertical installation and with closure springs and latches for horizontal installation.
- One piece roll formed galvanized steel frame.
- Ensures positive locking in closed position.
- Interlocking galvanized steel blades.

**MODEL GFD—V/GFD—H TYPE A
(VERTICAL AND HORIZONTAL)**

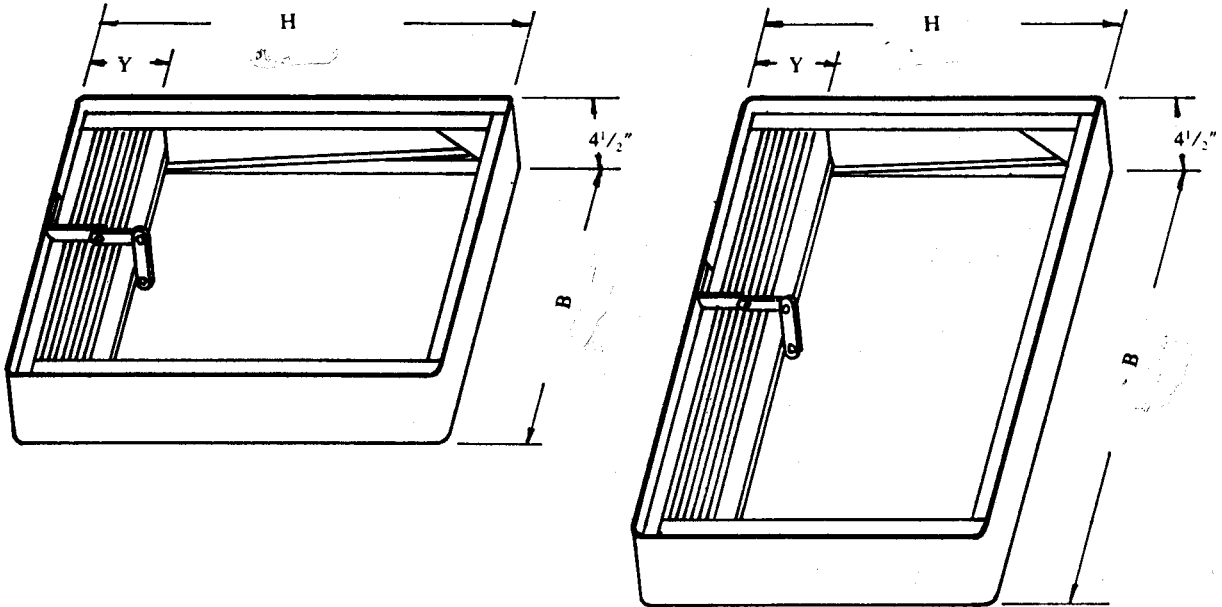
STANDARD CONSTRUCTION

- Frame — Rolled formed, 4-1/2" X 20 ga. galvanized steel channel.
 Blades — Interlocking type, 20 ga. galvanized steel.
 Fusible link — 165° F standard available also with 212° F, UL Listed.
 Mounting — Vertical or horizontal.
 Fire rating — 3 hour standard.
 Finish — Mill galvanized; ASTM standard A 525 G — 60.
 Closure springs — Stainless steel.



**MODEL GFD-V TYPE A
(VERTICAL)**


GOLDEN STAR
 SAUDI AIR CONTROL SYSTEM

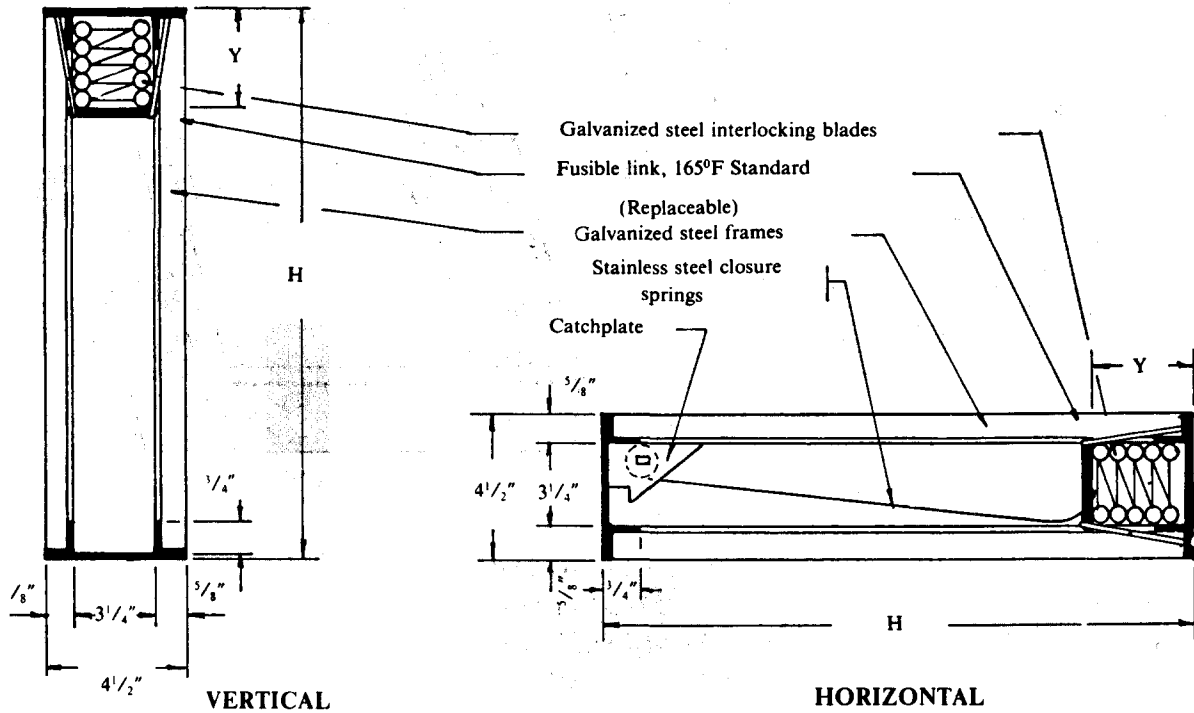


MODEL GFD—H TYPE A
(HORIZONTAL)
DIMENSIONS
SINGLE SECTION SIZES

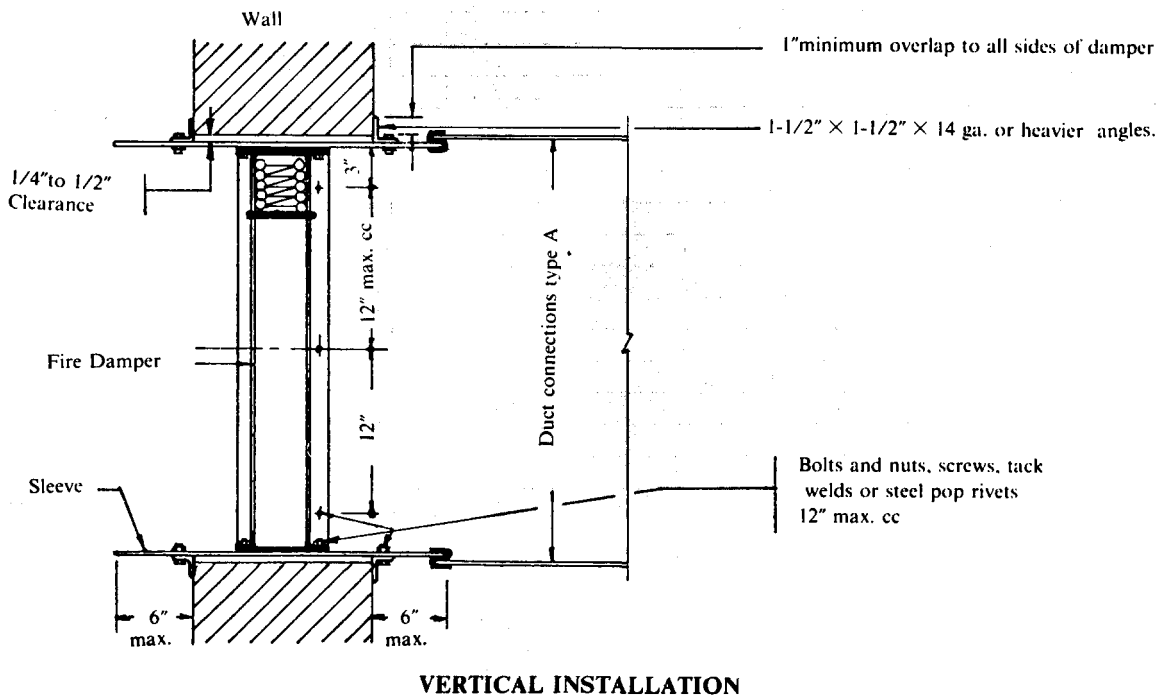
B × H (INCHES)	Y (INCHES)	B × H (INCHES)	Y (INCHES)	B × H (INCHES)	Y (INCHES)
6	1-1/4	23	3-1/4	40	4-3/4
7	1-1/4	24	3-1/4	41	5-1/4
8	1-3/4	25	3-1/4	42	5-1/4
9	1-3/4	26	3-1/4	43	5-1/4
10	1-3/4	27	3-3/4	44	5-1/4
11	1-3/4	28	3-3/4	45	5-1/4
12	1-3/4	29	3-3/4	46	5-3/4
13	2-1/4	30	3-3/4	47	5-3/4
14	2-1/4	31	3-3/4	48	5-3/4
15	2-1/4	32	4-1/4	49	5-3/4
16	2-1/4	33	4-1/4	50	5-3/4
17	2-3/4	34	4-1/4	51	6-1/4
18	2-3/4	35	4-1/4	52	6-1/4
19	2-3/4	36	4-3/4	53	6-1/4
20	2-3/4	37	4-3/4	54	6-1/4
21	2-3/4	38	4-3/4	55	6-3/4
22	3-1/4	39	4-3/4	56	6-3/4

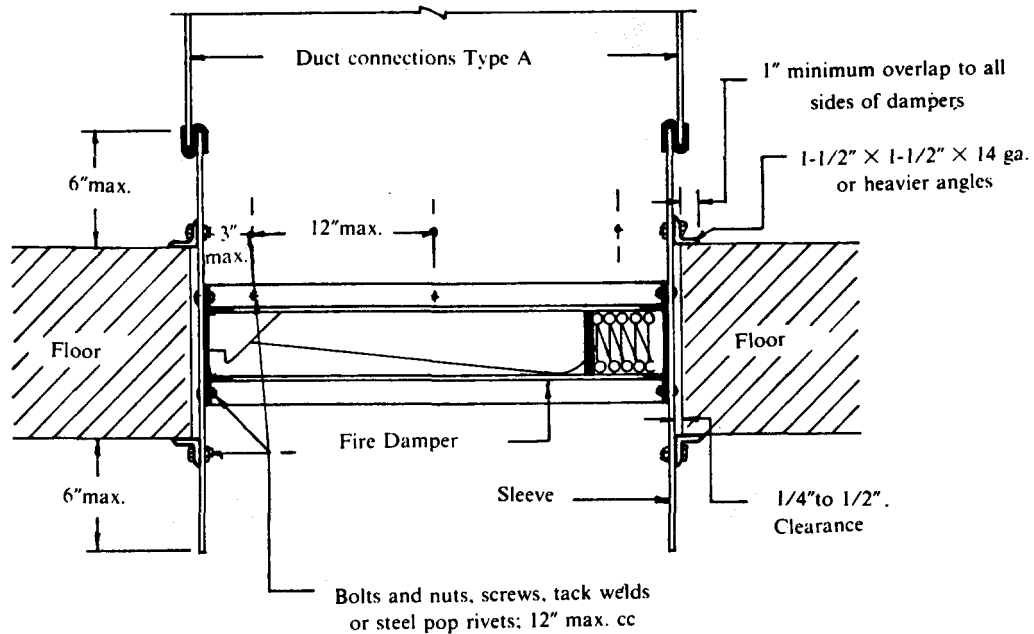
NOTE: Other sizes larger than maximum single section sizes are assembled from equal size of single section dampers.
 B & H dimensions are duct sizes. Fire dampers are fabricated 1/4" less than given duct size.

DIMENSIONAL DETAILS
(MODEL GFD-V / GFD-H TYPE A)



INSTALLATION DETAILS (MODEL GFD-V / GFD-H TYPE A)





HORIZONTAL INSTALLATION

NOTES: Figure shows the vertical and horizontal installation details for a specific requirements for installation.

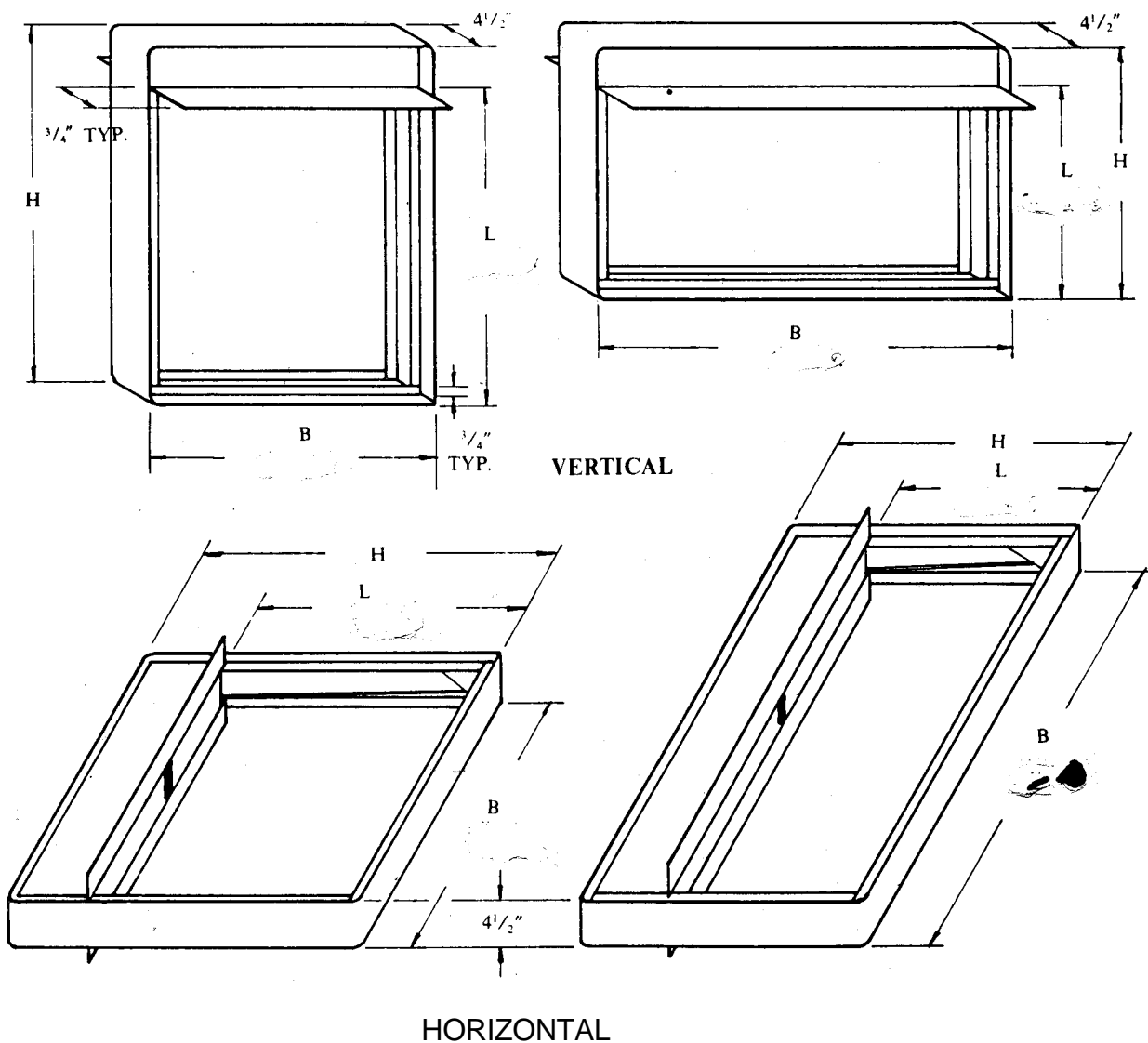
1. A clearance of 1/4" to 1/2" shall be provide between the sleeve and wall/floor openings.
2. Sleeve shall be of the same gage as the duct to conform with SMACNA duct standards. Sleeve shall be extended approximately 6" max. on either side of wall or floor to facilitate the joining of the sleeve to the duct. The following Duct Sleeve Connections may be used : Hemmed S Slip, Inside S Slip, Plain S Slip, Double S Slip, Standing S Slip, Reinforced Standing S Slip, Alternate Standing S Slip, Angle S Slip, Cup S Slip, Drive S Slip, and Pocket Lock.
3. Mounting angles shall be a minimum of 1-1/2" X 1-1/2" X 14 ga. and shall be fasten to sleeve with bolts and nuts, screws, tack welds or steel pop rivets at 12" maximum spacing with a minimum of two connections in each top, side and bottom. Mounting angles shall overlap wall a minimum of 1" on all four sides.
- 4- Fire damper shall be bolted, screwed, tack welded or steel pop riveted to sleeve on the same spacings as mounting angles.

MODEL GFD-V/ GFD-H TYPE B

(HORIZONTAL AND VERTICAL)

STANDARD CONSTRUCTION:

- Frame — Rolled formed, 4-1/2" X 20 ga. galvanized steel channel.
- Blades — Interlocking type, 20 ga. galvanized steel.
- Fusible link — 165°F standard; available also with 212°F, UL Listed.
- Enclosure — 20 ga. galvanized steel.
- Mounting — Vertical or horizontal.
- Fire rating — 3 hour standard.
- Finish — Mill galvanized; ASTM standard A 525 G-60.
- Closure springs — Stainless steel



GOLDEN STAR
SAUDI AIR CONTROL SYSTEM

DIMENSIONS

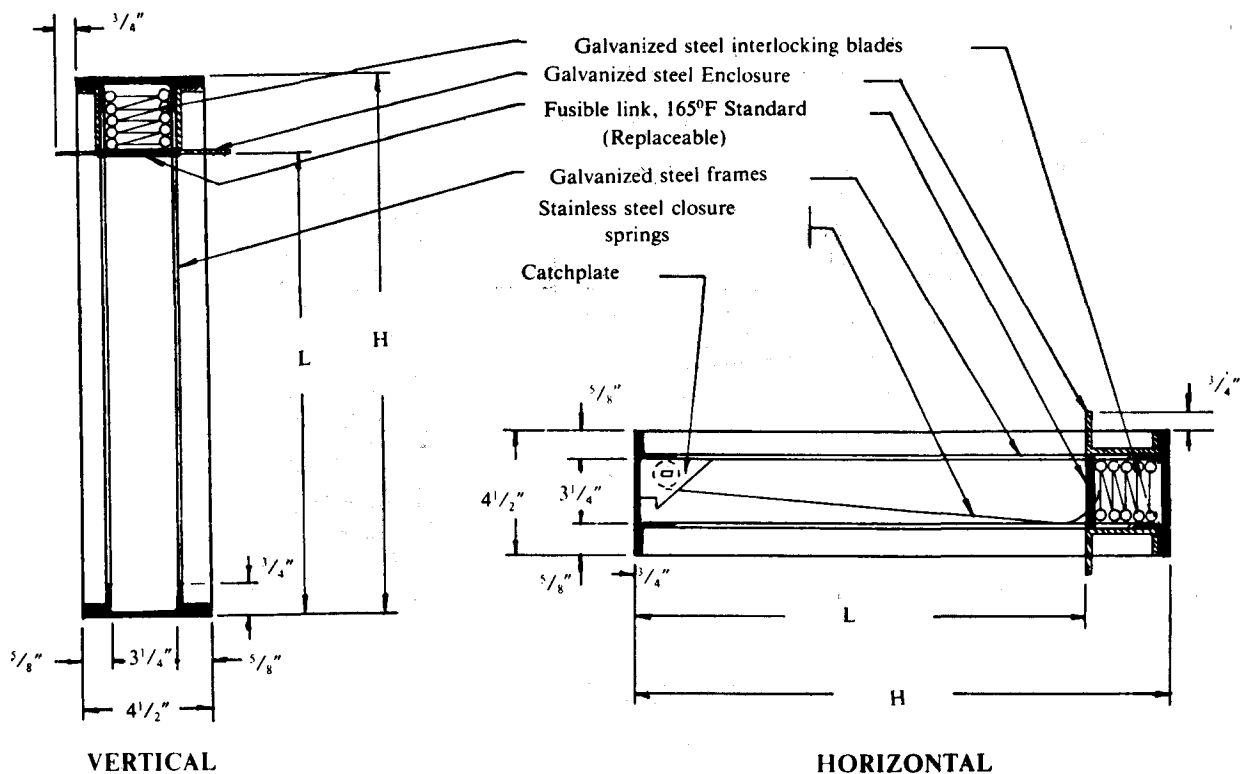
(SINGLE SECTION SIZES)

B × L (INCHES)	H (INCHES)	B × L (INCHES)	H (INCHES)	B × L (INCHES)	H (INCHES)
5	6-1/2	20	23	35	39-1/2
6	7-1/2	21	24	36	41
7	8-1/2	22	25-1/2	37	42
8	10	23	26-1/2	38	43
9	11	24	27-1/2	39	44
10	12	25	28-1/2	40	45
11	13	26	29-1/2	41	46-1/2
12	14	27	31	42	47-1/2
13	15-1/2	28	32	43	48-1/2
14	16-1/2	29	33	44	49-1/2
15	17-1/2	30	34	45	50-1/2
16	18-1/2	31	35	46	52
17	20	32	36-1/2	47	53
18	21	33	37-1/2	48	54
19	22	34	38-1/2	49	55
				50	56

Other sizes larger than maximum single section sizes are assembled from equal size of single section dampers.

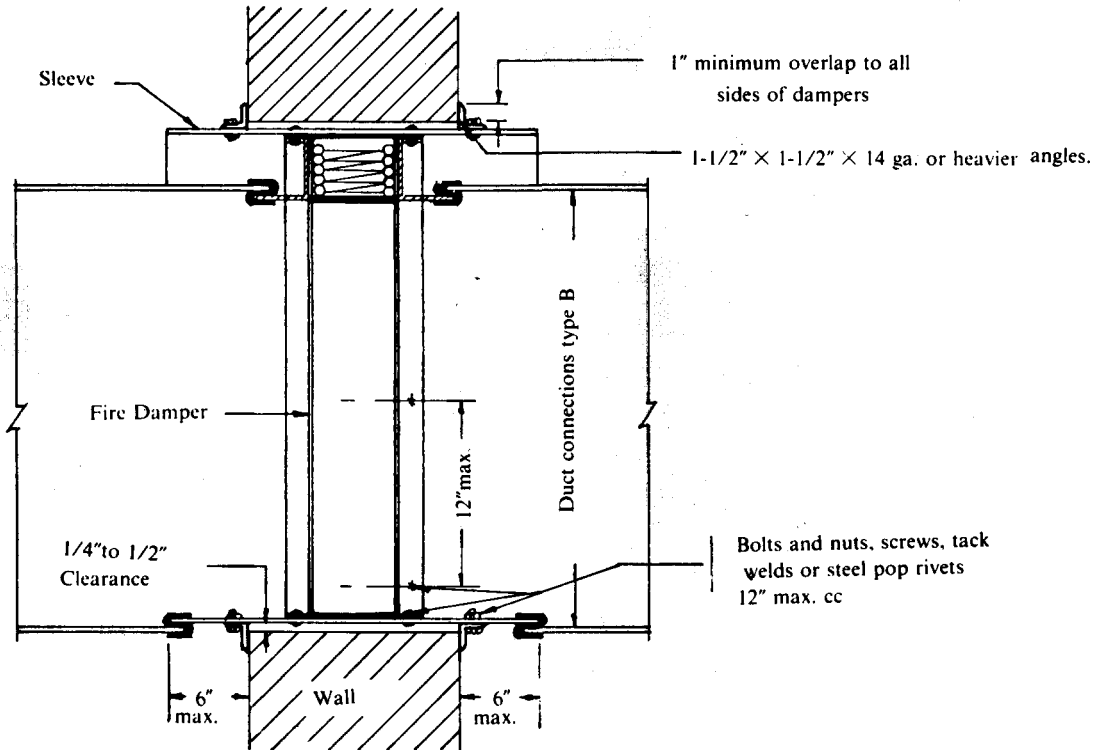
B & L dimensions are duct sizes. Fire dampers are fabricated 1/4" less than given duct size.

DIMENSIONAL DETAILS
(MODEL GFD-V/GFD-H TYPE B)



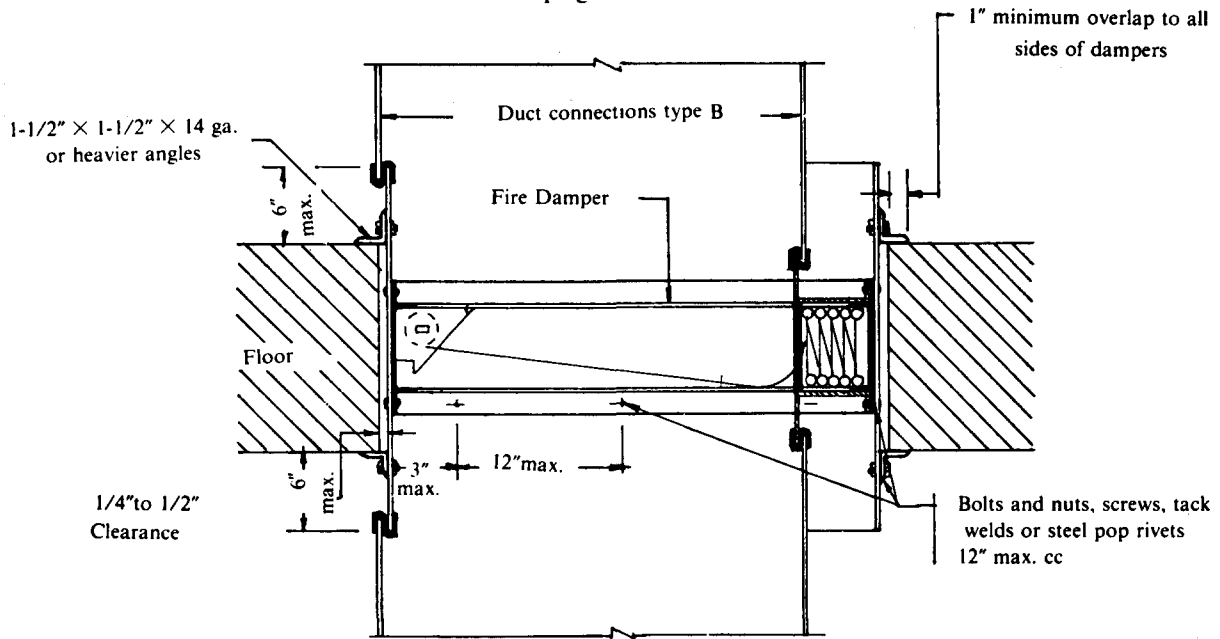
GOLDEN STAR
SAUDI AIR CONTROL SYSTEM

INSTALLATION DETAILS
(MODEL GFD-V / GFD-H TYPE B)



VERTICAL INSTALLATION

NOTE: For installation notes, refer on page 5



HORIZONTAL INSTALLATIONS

MODEL GFD-V / GFD-H TYPE SR, R, 0.

GFD-V/GFD-H TYPE SR (square or rectangular), R (round), and 0 (oval) fire dampers are designed for high velocity ducts providing a nominal 100% free area

STANDARD CONSTRUCTION:

Frame — Rolled formed, 4-1/2" X 20 ga. galvanized steel channel.

Blades — Interlocking type, 20 ga. galvanized steel.

Enclosure — 22ga. galvanized steel.

Fusible link — 165°F standard; available also with 212°F. UL Listed.

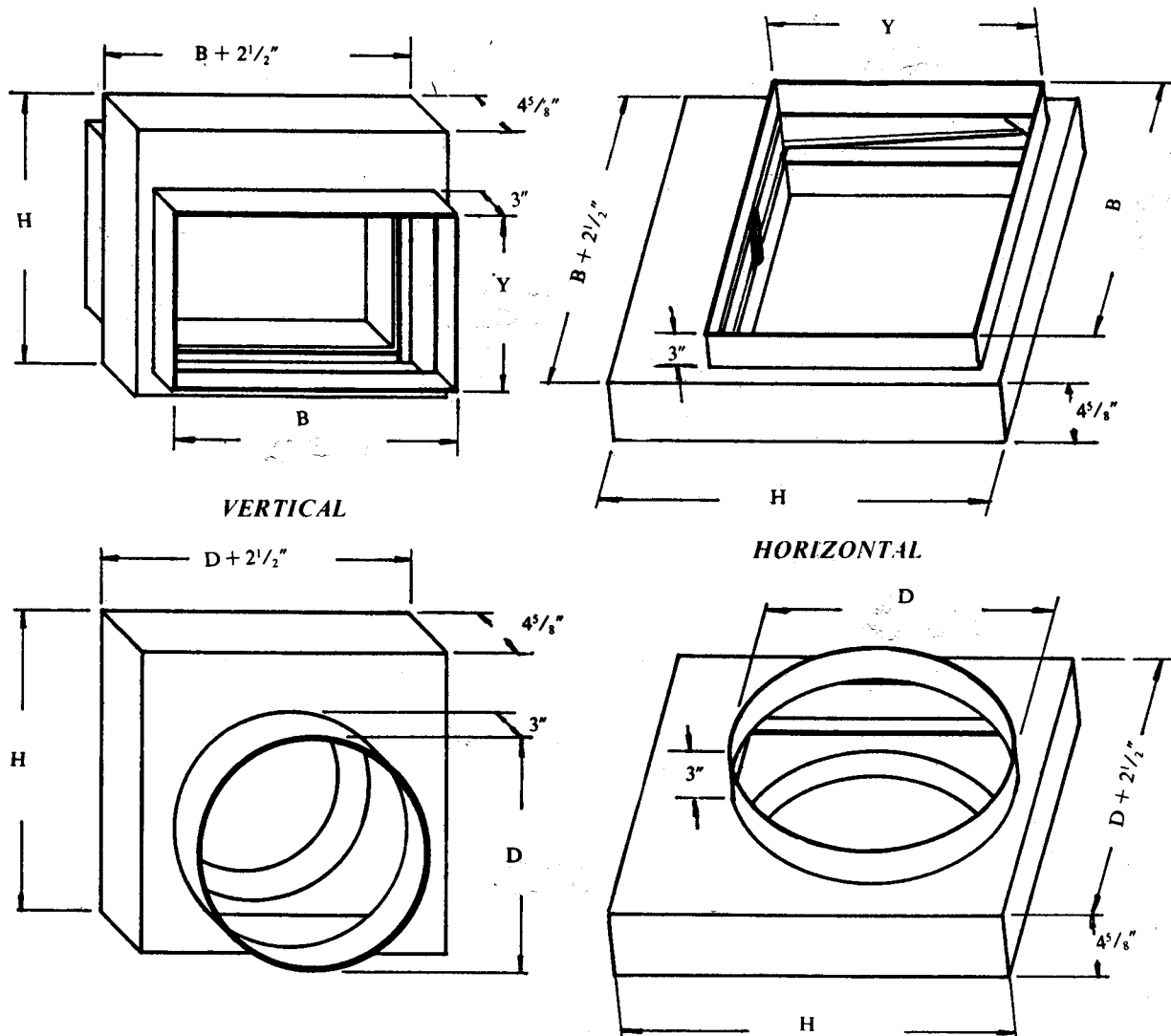
Mounting — Vertical or horizontal.

Fire rating — 3 hour standard.

Finish — Mill galvanized; ASTM standard A 525 G-60.

Closure springs — Stainless steel

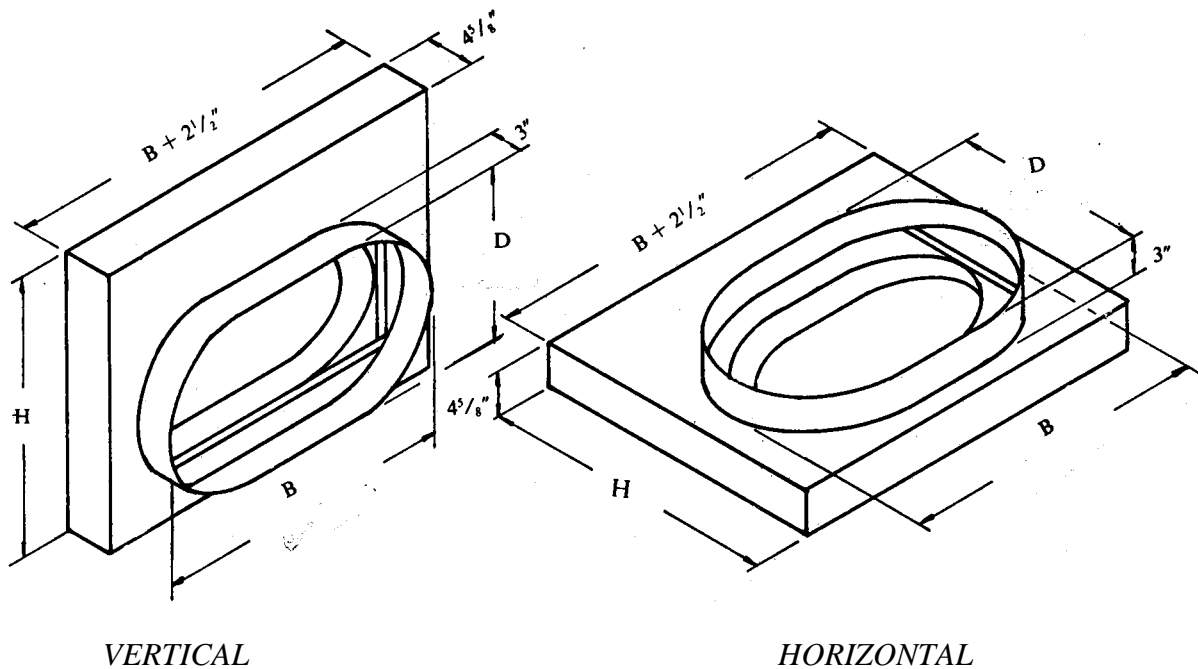
MODEL GFD-V / GFD-H TYPE SR



MODEL GFD-V / GFD-H TYPE R


GOLDEN STAR
 SAUDI AIR CONTROL SYSTEM

(MODEL GFD-V / GFD-H TYPE0)



DIMENSIONS

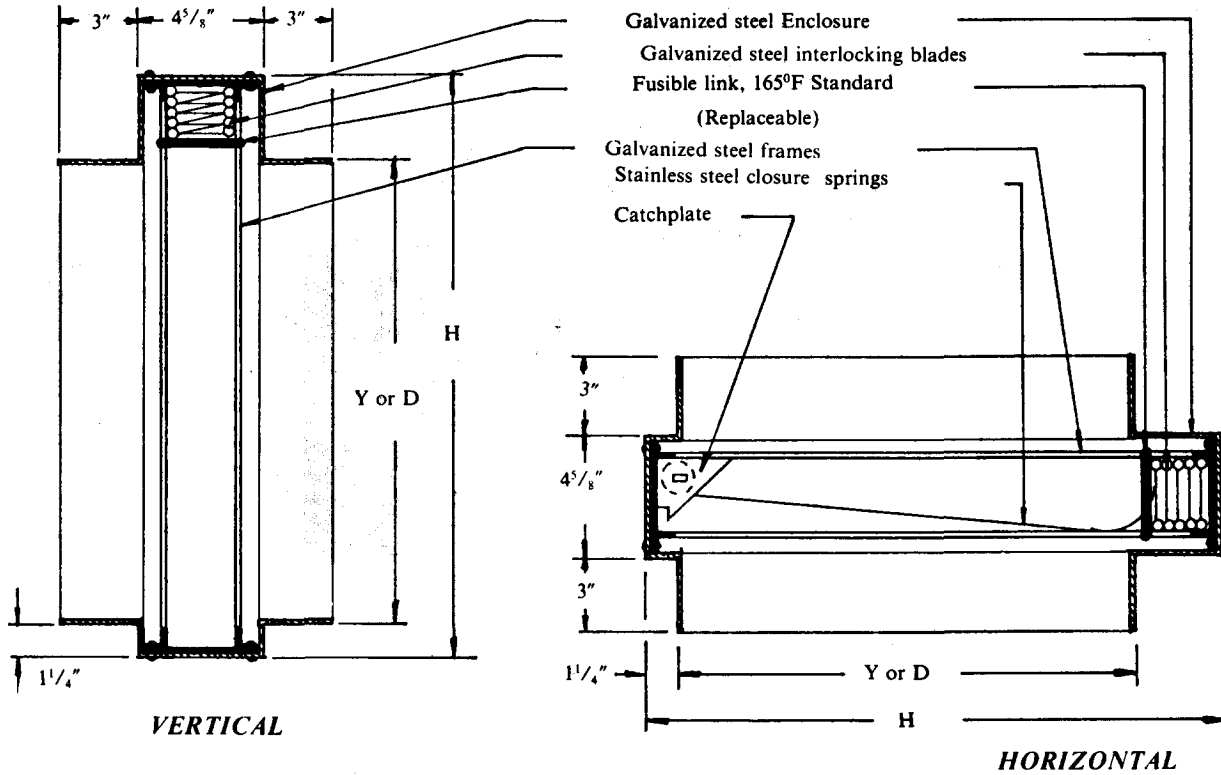
(SINGLE SECTION SIZES)

B, Y or D (INCHES)	H (INCHES)	B, Y or D (INCHES)	H (INCHES)	B, Y or D (INCHES)	H (INCHES)
4	7	20	25	36	42-1/2
5	8	21	26	37	43-1/2
6	9-1/2	22	27	38	44-1/2
7	10-1/2	23	28	39	46
8	11-1/2	24	29	40	47
9	12-1/2	25	30-1/2	41	48
10	13-1/2	26	31-1/2	42	49
11	15	27	32-1/2	43	50
12	16	28	33-1/2	44	51-1/2
13	17	29	34-1/2	45	52-1/2
14	18	30	36	46	53-1/2
15	19-1/2	31	37	47	54-1/2
16	20-1/2	32	38	48	55-1/2
17	21-1/2	33	39	49	57
18	22-1/2	34	40-1/2		
19	23-1/2	35	41-1/2		

NOTE: Other sizes larger than maximum single section sizes are assembled from equal size of single section dampers.

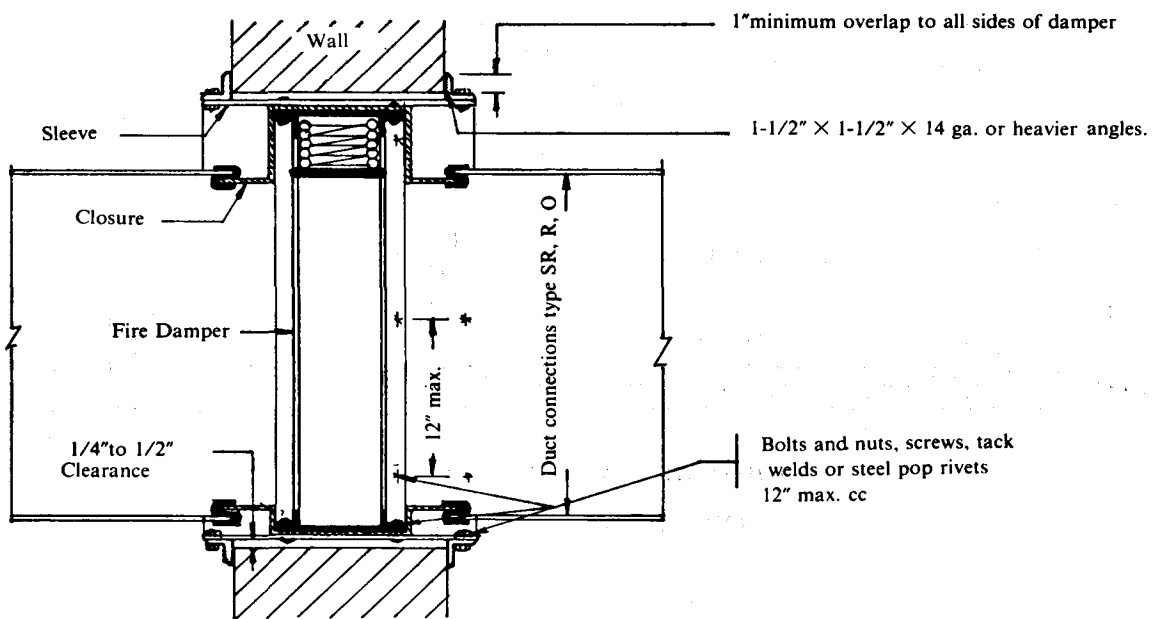
B Y or D dimensions are duct sizes. Fire dampers are fabricated 1/4" less than given duct size.

DIMENSIONAL DETAILS



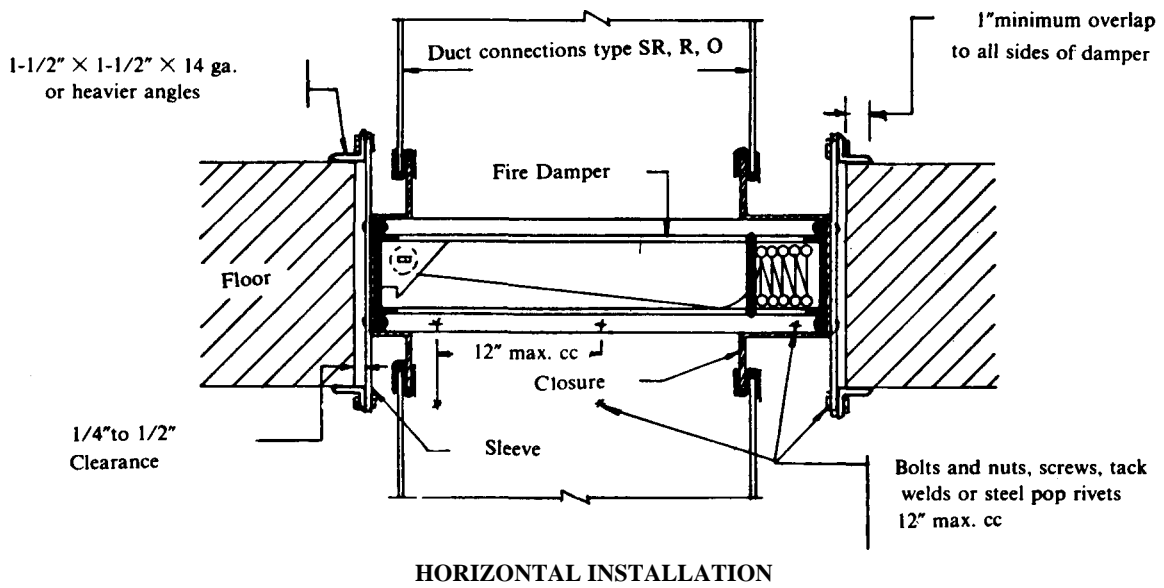
INSTALLATION DETAILS

(MODEL GFD-V / GFD-H TYPE SR, R AND O)



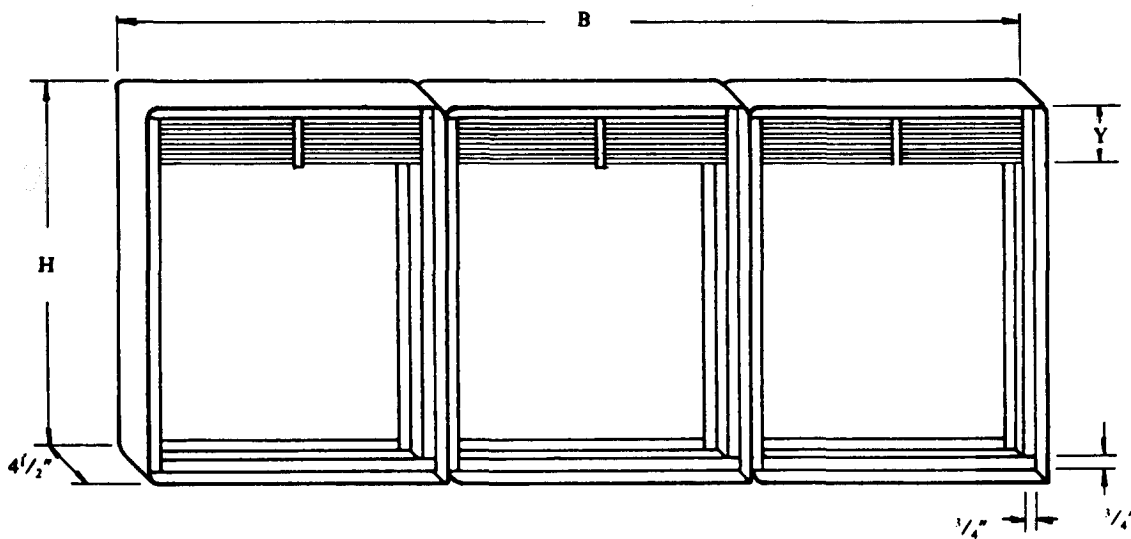
VERTICAL INSTALLATION


GOLDEN STAR
 SAUDI AIR CONTROL SYSTEM



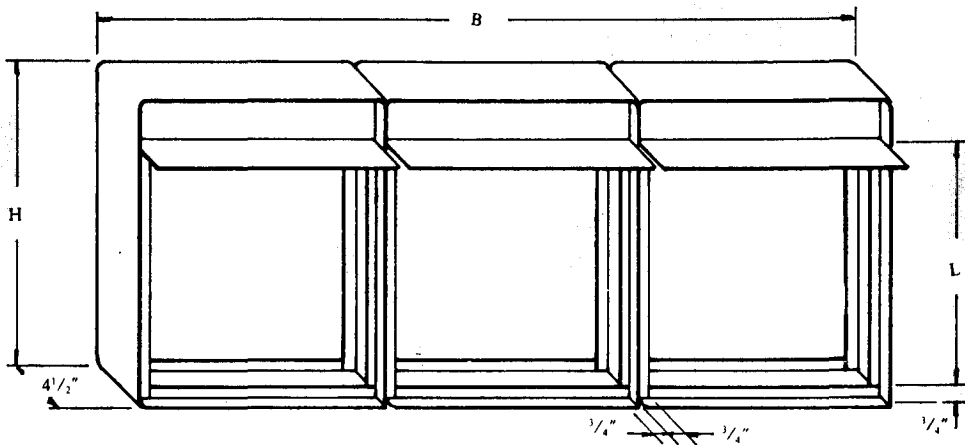
NOTE: For installation notes, refer on page 5.

MULTI SECTION FIRE DAMPERS

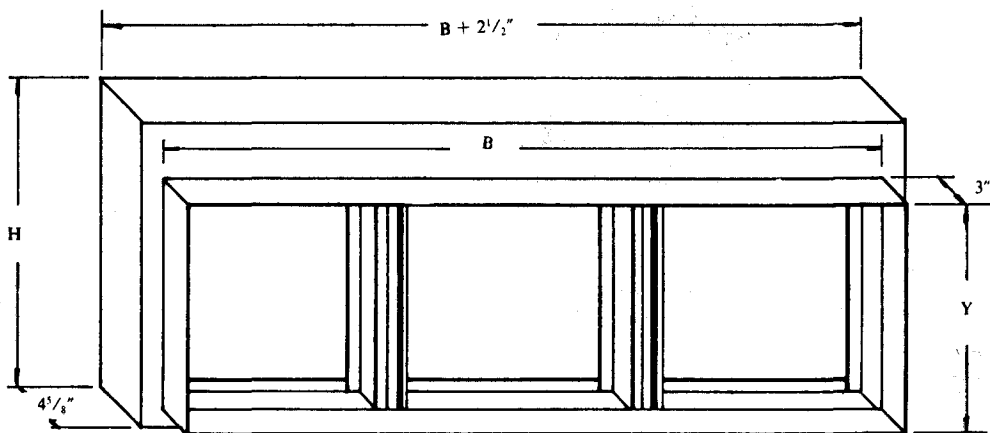


MODEL GFD - V/GFD - H TYPE A
 (Vertical or horizontal)


GOLDEN STAR
 SAUDI AIR CONTROL SYSTEM



MODEL GFD-V / GFD-H TYPE B
(Vertical or horizontal)



MODEL GFD-V / GFD-H TYPE SR, R AND 0
(Vertical or horizontal)

